



**4 process**  
OPTIMIERTE SYSTEME

**SAP® BUSINESS BYDESIGN®**



**PRODUCT OVERVIEW**

**VALUE ADDED**

**FUNCTIONAL DESCRIPTION**

**SYSTEM MAPPING**



## SAP® BUSINESS BYDESIGN®

This solution is a fully integrated enterprise software specifically for small and medium-sized businesses based on service-oriented architecture (SOA). Based on preconfigured best practices, SAP® Business ByDesign® combines the familiar convenience of ERP solutions with fixed calculable investment costs and a firmly defined range of functions while at the same time minimizing IT requirements.

For project/service-driven companies, the unified ERP cloud solution is particularly well suited, as it provides fast-growing, medium-sized companies with competitive success and does not burden them with unnecessary costs and complexity.

## VALUE ADDED

# SAP® BUSINESS BYDESIGN®

- Out-of-the-box solution suite with integrated best-practice processes across all business units
- Scalability: add users and reconfigure processes
- In-memory database for analytics based on real-time data
- Extensibility with customer and industry-specific applications

## + CLOUD SOLUTION

- Uniform and fully integrated
- Transparent and configurable

## + IMMEDIATELY USABLE

- SaaS solution
- Monthly subscription fee, quarterly releases
- No modernization and maintenance costs

## + FLEXIBLE

- Short implementation phase
- Includes all typical business processes
- Easily adaptable to your needs

# CORE FUNCTIONS IN A BUSINESS SUITE

- Financials:

Get a real-time view of your company's financial health, streamline core accounting processes, and manage cash flow and liquidity more efficiently.

- Customer relationship management:

Increase customer loyalty and manage all your marketing, sales, and service processes by integrating your front- and back-office processes in a single solution.

- Human resources:

Streamline HR processes such as organizational and personnel management and provide your employees with self-service features such as time and attendance tracking.

- Project management:

Coordinate projects of any size and complexity while engaging all functional areas. Simplify how your teams manage, deliver, and monitor projects in real time.



# CORE FUNCTIONS IN A BUSINESS SUITE

- **Procurement:**

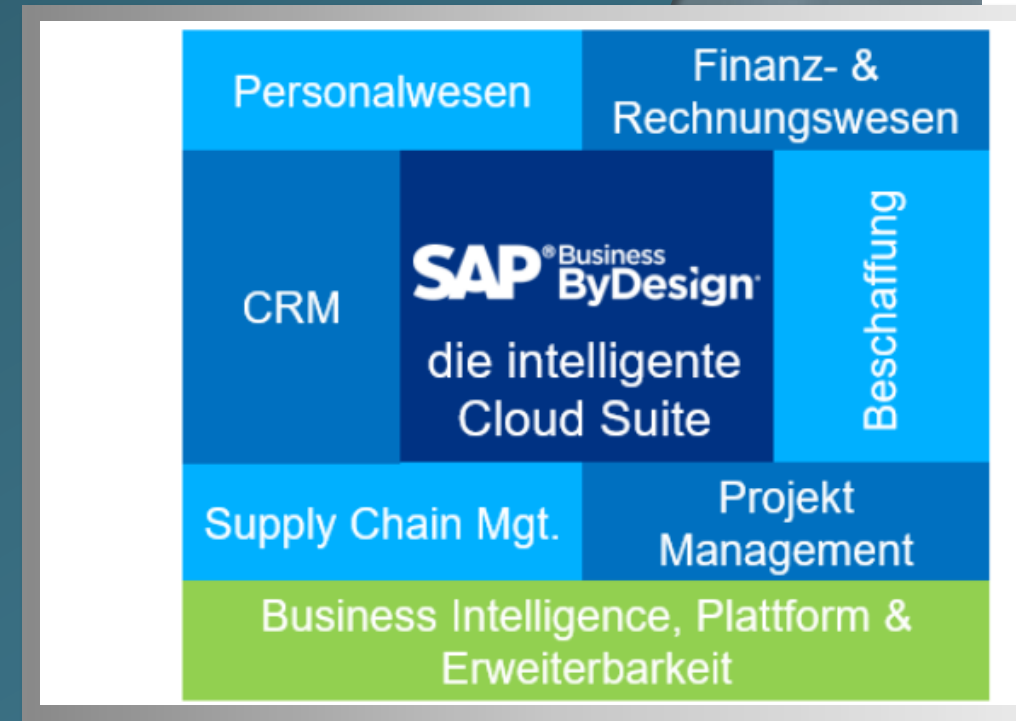
Control purchasing and contract management, including strategic sourcing, bid processing, and managing your supplier base. In addition, strengthen the competence of your employees with Self-Service functions.

- **Supply Chain Management:**

Model your internal and external logistics, integrate the value chain, and get full cost visibility, always up-to-date inventory valuation, and tight process integration.

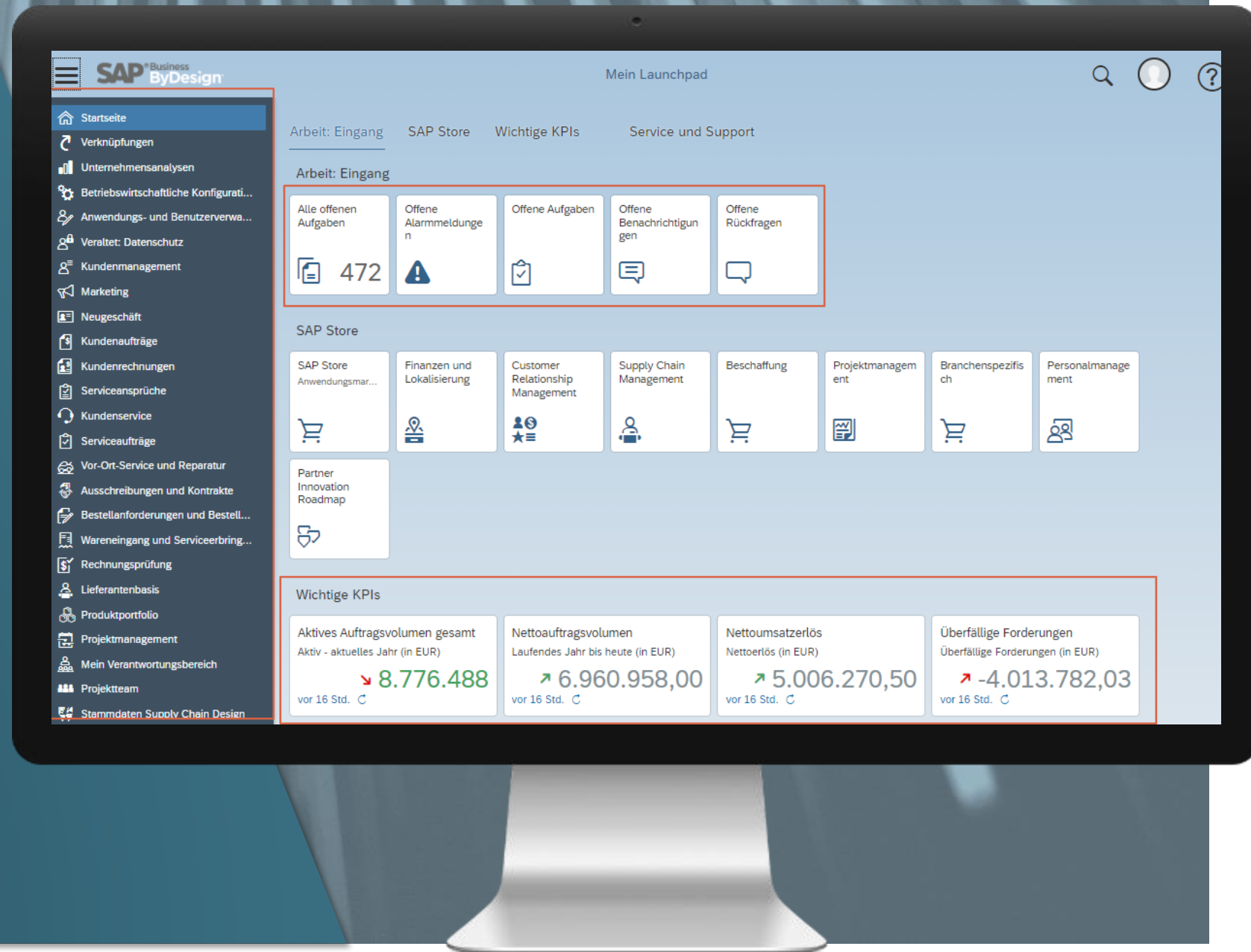
- **Localization:**

Accelerate your entry into new markets. With customers in more than 100 countries and powerful globalization and translation tools based on local best practices, SAP Business ByDesign flexibly adapts to country-specific tax regulations, different currencies, and languages.



# LAUNCHPAD

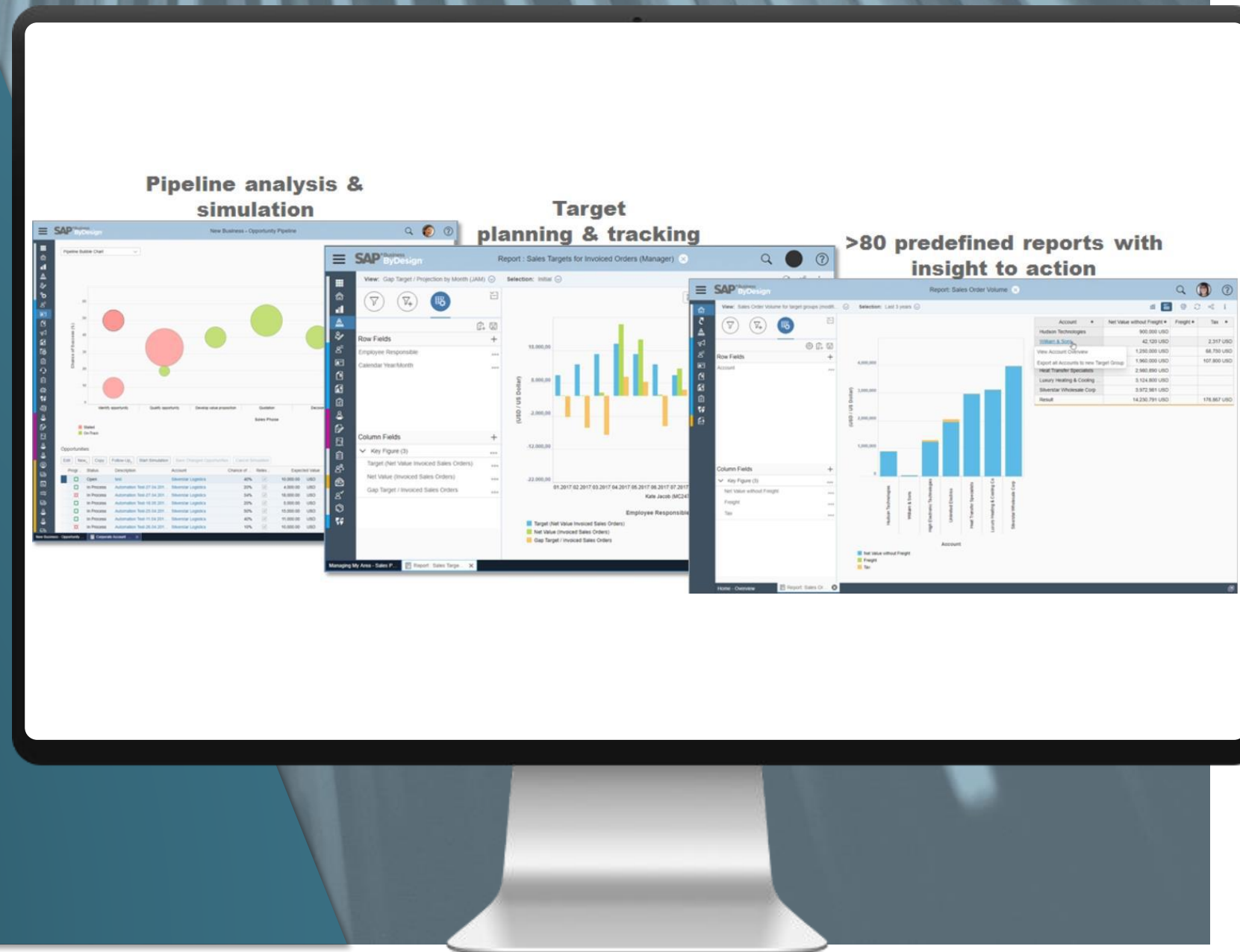
- The Launchpad is the starting point in SAP Business ByDesign . Different groups of tiles are available, which can be easily customized by the users.
- Depending on the authorizations, different Work Centers as well as associated Work Center views are available to the users on the left side.



## SYSTEM MAPPING

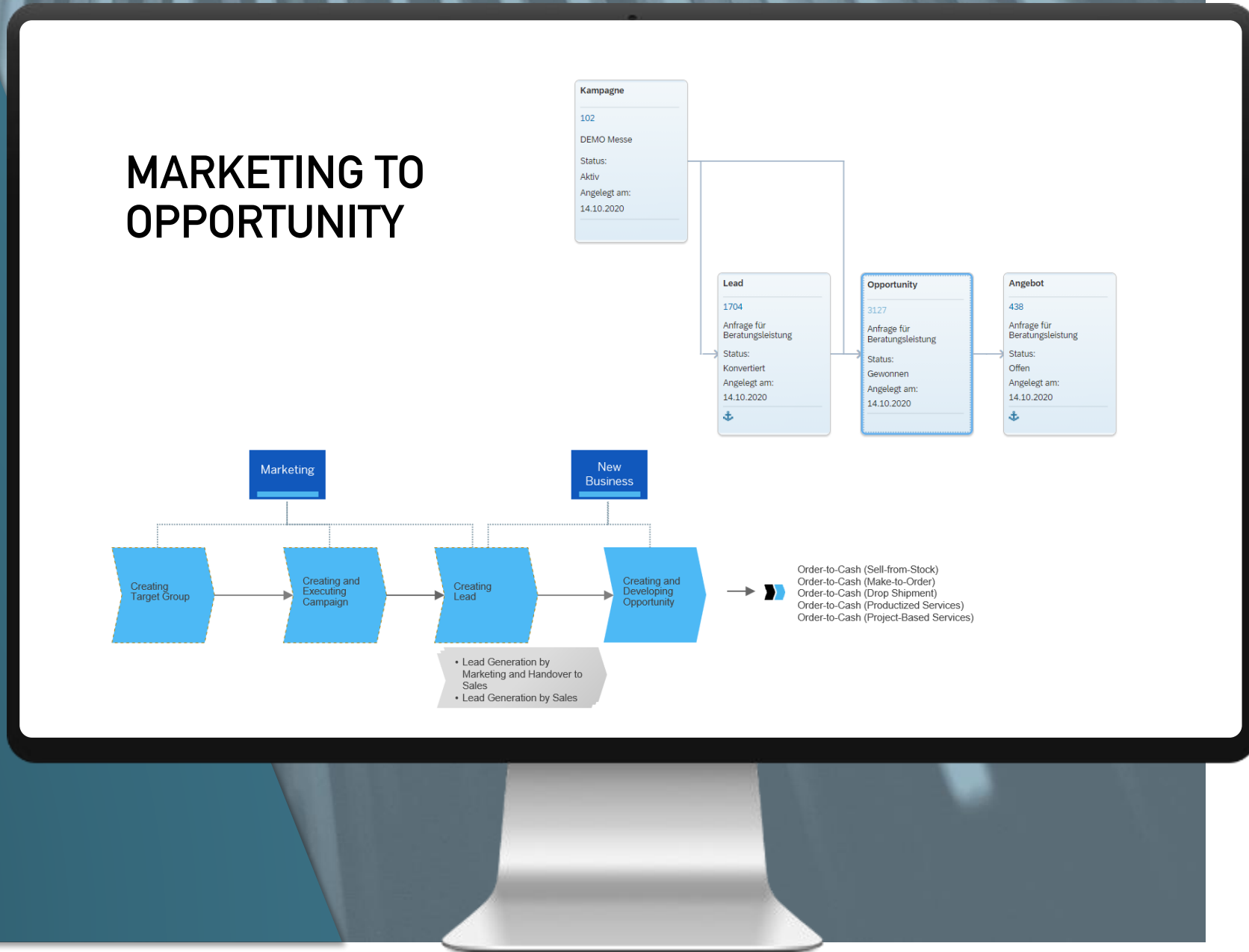
# ANALYTICS AND REPORTING

- The solution enables users to monitor KPIs and reports.
- With built-in analytics capabilities, users can also create custom KPIs and reports that align with their organization's business needs.



# RECEIPT FLOW

- To monitor and analyze the document chain, each document has a document flow, which is a graphical representation of the document chain.
- The system saves the data of the individual steps in an operative business process in the form of a document, e.g. an opportunity, a quotation, a sales order, a delivery or a customer invoice.





**Nikolaj Khablo**  
Diploma in Business Informatics  
Manager Sales and Marketing



4process AG  
Dr.-Emil-Brichta-Str. 3a  
94036 Passau

Phone +49 851 49061-131  
Telefax +49 851 49061-29  
Mobile +49 151 28161350

nikolaj.khablo@4process.de  
www.4process.de



# Contact us!

